

Costume Coordinator: Alicia Bell (Sawyer's & Georgia's mom)

aliciarosebell@gmail.com

text 972 757 2460

This document provides guidelines for the character costumes in PCT's Fall 2014 production of Annie. The photos and images are not intended to indicate an exact style or color but to provide a visual reference for the type of look we're hoping to achieve. As you build your costume, you may have questions. Please contact me Alicia Bell at aliciarosebell@gmail.com or text [972 757 2460](tel:9727572460). Pictures are helpful so send them my way. Our number one priority in developing costumes for this show is to create an engaging, visual experience for the audience that enhances the production. While we want our kids to look as professional as possible on the big Courtyard stage, we understand that costume expenses are the parents' responsibility and do our best to be reasonable in our requirements and work with what you have and/or can find as much as possible. We'll also create and/or purchase some smaller items and request reimbursement, that way the characters who are meant to can have a uniform, pulled together look. Thank you for your valuable contributions to making our production of Annie come to life on stage!

Note, especially for our new parents to PCT:

When working on your costumes, there are several ways to find items:

- Look through your own closets and think outside of the box
- Look through the costume room at PCT. Likely are some good orphan outfits and perhaps some period pieces that could work. Just bring your patience; it's packed. You'll need to coordinate going in there with Alicia or the PCT office. It usually costs \$5 to borrow something and I think you need to clean it before returning it.
- Visit thrift shops, like Goodwill
<http://www.goodwill.org/locator/?service%5B%5D=3&service%5B%5D=2&location=>
- Search online including eBay
- Halloween costume shops at this time of year
- Dallas Vintage Shop <http://dallasvintageshop.com> Tons of stuff but not cheap
- Rental costume shops – again, not cheap

And please don't be afraid to ask for help or suggestions.

Annie Costumes

PCT 2014

The story of Annie is set in the 1920s during the Great Depression. The dress of that time was more formal than we see in modern day—more suits, jewelry, dress shoes, etc. At the same time, few had the means to maintain fashionable dress.

Our orphans represent one end of the spectrum with worn, patched clothing. Our townspeople show the regular, working class of the time. Hannigan, her brother and his girlfriend try to keep up an appearance of style, but fall short of sophistication. The servants and people who support the Warbucks household have a uniformed look, while Bert Healy and his girls have an over-the-top entertainer's look. And Warbucks and Grace are showcase effortless class.

Orphans

The orphanage is a dingy, drab place and costumes should be accordingly worn, patched and dirty looking. At the same time, we are filling a stage and entertaining an audience with a story about a vibrant little girl. To achieve that balance, the costumes for the orphans should include muted pinafores, dresses, shoes, and so on, but costumes for the individual orphans below include pops of signature colors and patterns that bring the visual to life.

All orphans should wear chunky tie up boots or oxfords or chunky Mary Janes. Preferably in black.





For the orphans below, let's **coordinate the accent pieces** we're able to find. We don't have to stick to the suggestions/ideas for the characters below, but at the same time we don't want everyone to have funky socks or the same color hair ribbon.

Accent pieces in blue, lime/bright green, pink and red as well as patterns in these colors will help make our young actresses “pop” on the stage and as long as they’re mixed with the traditional muted dresses and pinafores, the look of the orphanage will remain intact. This approach matches what’s being done in the latest on-Broadway revival of Annie. Please see the photos and also the ideas below for how to make each character distinct.

Molly

Pink hair ribbons and/or striped socks

Pepper

Lime green crochet hat or similar lime green accent

Tessie

Pink cotton dress under her muted, patched pinafore

July

Pops of yellow in socks and/or dress

Duffy

Striped blue dress or blue accents

Kate

Orange plaid dress with bright socks or stockings

NOTE: Orphan Petticoats

In addition to traditional dress and muted accent pieces, we want the orphans to have brighter colored petticoats (underskirts, think tutu) that will give their dresses some extra volume as well as create a splash of interesting color as they dance and move on stage. Bloomers may also be necessary for those who are doing cartwheels or going upside down as part of the choreography. Like the accent colors, strong vibrant (but not neon or too bright) solid petticoats in green, blue, orange, burgundy, etc. is what we’re looking for. We need to coordinate colors with each cast so that everyone doesn’t have the same. Please take stock of what you might have any let me know so we can go from there and order what we need. Note that your orphan’s petticoat and accent piece (socks, hat, scarf, whatever) do not have to be the same color, in fact it’s better if there’s variation.

Annie

Traditional for Annie. This has already been discussed with the moms.

Cotton dress, faded pinafore with patches, worn burgundy cardigan sweater. Traditional Red dress with white collar and cuffs, white cuff socks, black mary janes. Red hair wig (unless you happen to have red hair) ☺

Annie needs a formal winter coat for NYC scene.

Sandy

Ideally a dog costume/fur suit with hood and ears and painted face for nose, whiskers. If not, create the costume using a brown blanket sleeper or long sleeve brown shirt and pants and brown mittens. (The Strattons may or know where to find a similar dog suit since Samantha played Nana about a year ago in Becca's Peter Pan show).



Grace Farrell

A class act in cool blues or similarly elegant tones. A simple pearl necklace. Suit Jacket or a scarf pinned with a broach. Gloves when she visits Miss Hannigan. Character shoes (dance heels). Grace needs an elegant, period-style hat as well as a formal winter coat for the NYC scene.



Oliver Warbucks

Dark suit, a three-piece suit (with vest) would be great so he can have the jacket off at times. If not a vest, then dark suspenders. White dress shirt. Red tie or bowtie. Bald cap, darken eyebrows with a pencil. Warbucks needs a formal winter coat for the NYC scene. He also needs a fedora or top (formal) hat.

Miss Hannigan

Purple or other vibrant colored robe/housecoat, preferably satin or similar flashy material. Long lace dress or lace/satin nightgown. A beaded necklace and a feathered boa (during Little Girls) for accessories. Hair should be a total mess, could have a few stray foam rollers in or be tied in head wrap. Also need a flapper style, equally flashy/gaudy dress for final scenes (i.e. dressed when she leaves the house). She should wear Character shoes.



Rooster Hannigan

Loud, flashy and very GQ. Overly stylish menswear. Pinstripes, bold colors, tie or bow tie, optional fedora. Sharp-dressed 1920s man. A pencil mustache would be a great addition. Dress shoes (ideally white or saddle shoes).

Also need a radically different look such as denim overalls or a muted browns and beiges look, like well-worn dress shirt, tweed vest or blazer(with patches), dark pants, a stray or newsboy hat, as well as tear away beard, wire rim glasses and/or other easily removable items to create the disguise of Mr. Mudge.



Lily St. Regis

Stylish, flashy flapper-style dress in red or other bold color, lots of jewelry (long necklace, bracelet), gloves would be great. Character shoes.

Also needs a muted color, plain poor-woman's dress, lace shawl and/or long brown or trench coat and a wig, different color than her normal hair color, to create the disguise of Mrs. Mudge.

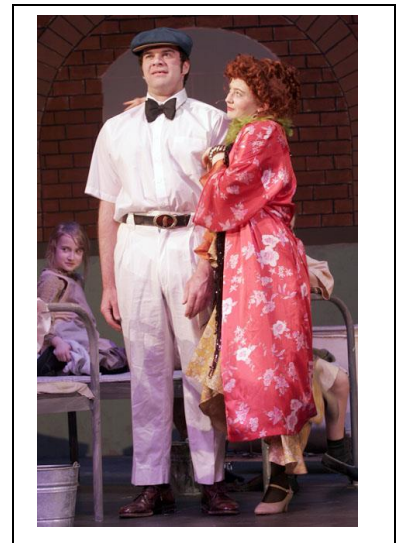


Bundles McCloskey

Light khaki slacks, short-sleeve white dress shirt, brown bow tie, tan or brown suspenders. Brown loafers.

Star-to-Be

Drop-waist or flapper dress, scarf, gloves, small felt hat or head piece, beaded or pearl jewelry. Heels or character shoes.



Drake (Butler)

Tuxedo or at least a vest (if no jacket). Black bowtie or ascot. White gloves. Dark shoes.



Mrs. Greer (Housekeeper)

Black and white maid's costume. Other servants in the scene should be similarly dressed. Contact Alicia Bell with your child's size information so that we can coordinate with the other main servants.

Annette & Cecilia

Black and white maid costumes. These need to match. Contact Alicia Bell with your child's size information so that we can coordinate with the other main servants. These may be purchased on your behalf so that they can be uniform.



Mrs. Pugh

Green, gray or floral long-sleeved dress, long apron, maid's hat/headpiece.





Radio Announcer/Sound Effects Woman

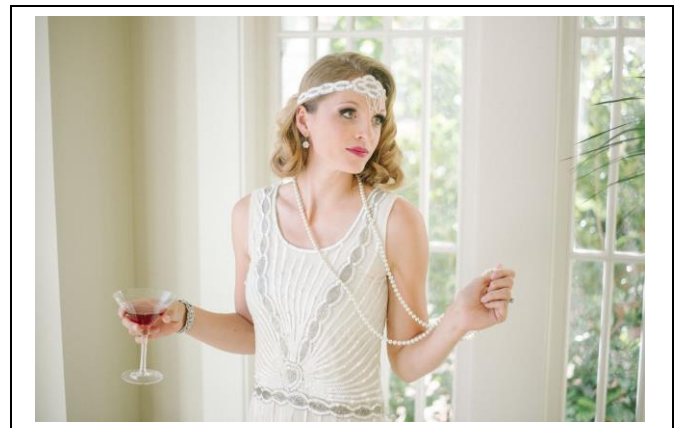
Plaid button-down vest OR argyle sweater vest, long-sleeved dress shirt, pleated dress slacks, bowtie. Newsboy hat optional.

Bert Healy

Plaid jacket (the louder the better), straw boater hat. Dress slacks, shoes and shirt. Bow tie.

Bert Healy's Girls

Flapper dresses, flapper headpiece/wrap, long pearls, heels (character shoes OK). Need to coordinate so that these girls look like a group. Identical dresses would be great if the moms are able to coordinate a purchase, but they do not have to be identical.



Louisa Howe (FDR's Assistant)

Suit jacket or cardigan sweater in a solid color with a floral dress or solid blouse and pleated skirt (either should fall below the knee). High heels (pumps). Hair in a low bun or similar conservative, tamed style.



Lt. Ward

Police officer uniform including jacket, hat and pants.
Dark shoes. Night stick.



Apple Seller

Long solid (ivory or white ideally)

apron over muted pants
and shirt. A vest or suspenders.
Can also wear a newsboy cap.



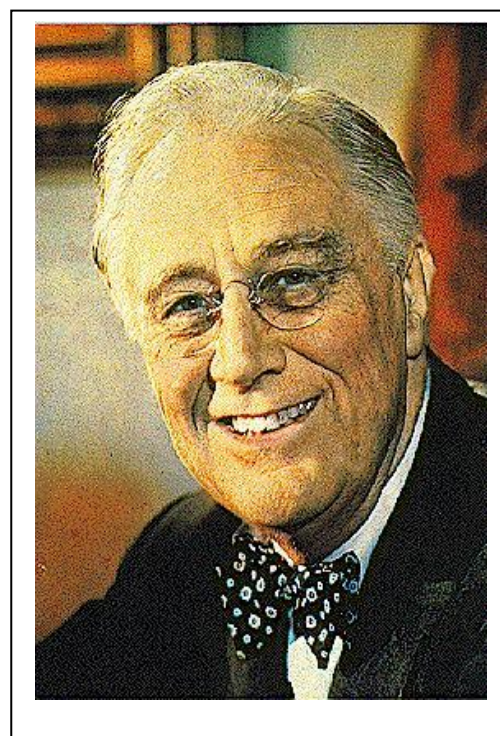
Dog Catcher

Newsboy cap, Brown pants, suspenders (muted color or
possibly red), white tan or light blue shirt (can be a button
down or a T-shirt)



President FDR

Gray or dark suit, white dress shirt and either
a tie or a bow tie. Wing tips or similar dress
shoes. Round wire-rimmed glasses. Need
dark/dress socks (may sit in a wheelchair...I
think there's one at PCT). Use hair
whitening/graying powder or spray and lines
on face to indicate age.



OFF Night/Other Costumes

In addition to their main character, cast members need to have off-night costumes to portray the characters and scenes in our group numbers.

Servants

Most everyone will need a servant costume. To keep this simple, we're looking for **black-and-white clothing** pieces with clean timeless lines (think school uniforms, oxford shirts, pleated slacks). A hat or headpiece and another accent will be purchased/made for your child for a nominal cost.



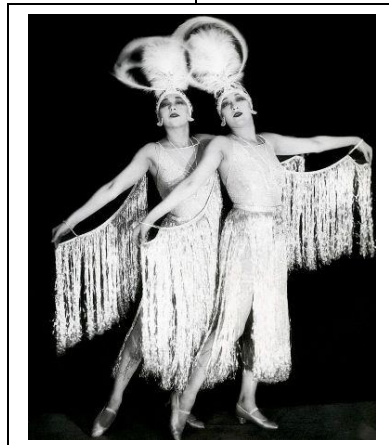
New Yorkers

Our city streets need to be alive with New Yorkers mulling about, setting the scene. Some characters will be able to wear their regular costume as off-night New Yorkers, but those with distinct characters need to be sure to have a different look that fits the time period.

NYC Ushers – At least 5 cast members will be identified as ushers. Dark slacks, formal-looking jackets and white gloves (available at costumes stores now) will complete the look. We may also provide a hat to perpetuate a uniform look.



Showgirls – 8-10 cast members will be chosen to play “Showgirls” in the NYC scene. These characters should wear glitzy costumes. Sequins, tights and dance-costume-like looks are in order. These girls may need to be identical, so wait for purchase. Showgirl parents will be contacted with further details.



People of NY

Those who are not identified as an usher or a showgirl can create a persona and costume of their choosing – bus driver, newsie, bum, etc - just keep the time period and style of dress in mind.

